
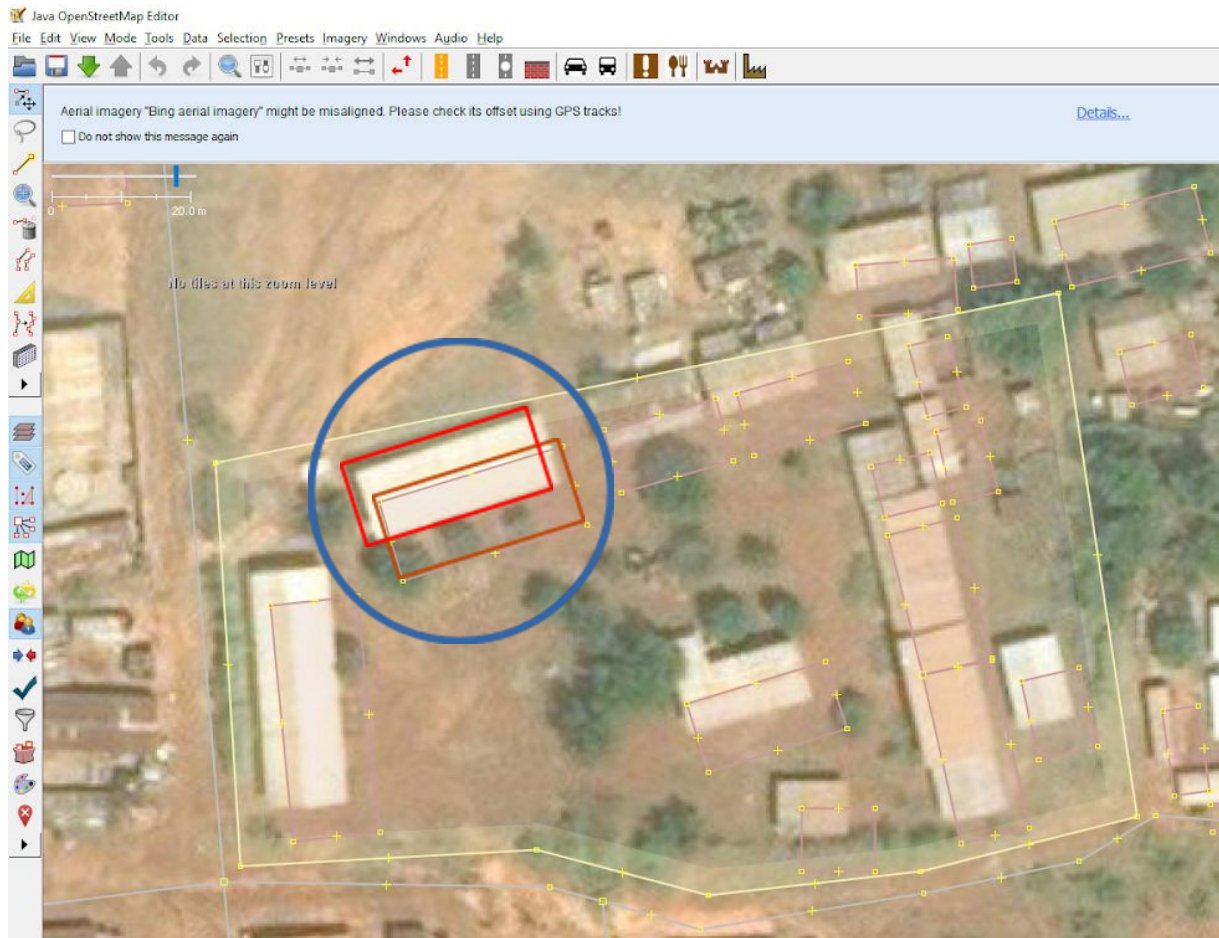
	<h2>Adjust imagery offset</h2> <p>Instructions just in case!</p> <p>mapathon <a href="#">Erasmus+ euYouthH_OSM</a> and <a href="#">UN mappers</a></p> <p>© CC BY</p>	
---	--	---

When using aerial images (e.g. Bing) for mapping, it can happen that existing objects are inaccurately placed or distorted (see the following image). The real location of objects can best be traced with your own GPS data. Since this data is not always available, **the map must be adapted to the existing objects.**



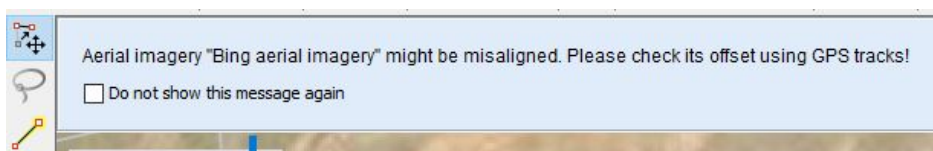
Further information and explanations: [https://wiki.openstreetmap.org/wiki/Using\\_Imagery](https://wiki.openstreetmap.org/wiki/Using_Imagery)


### **Instructions for correcting the offset:**

**Step 1:** Open JOSM with the appropriate data (e.g. from browser via remote control).

**Step 2:** Blend aerial photographs such as those used by Microsoft Bing (JOSM → Imagery/Bing aerial imagery).

**Step 3:** Visually check for possible displacement. Sometimes the following message appears:

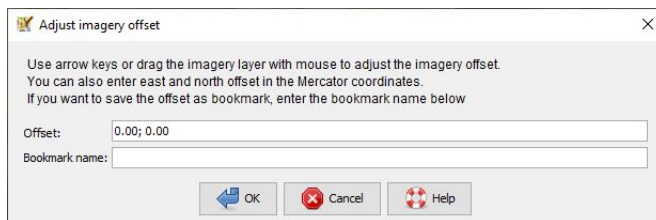


	<h2>Adjust imagery offset</h2> <p>Instructions just in case!</p> <p>mapathon <a href="#">Erasmus+ euYouth OSM</a> and <a href="#">UN mappers</a></p> <p>© CC BY</p>	
---	---	---

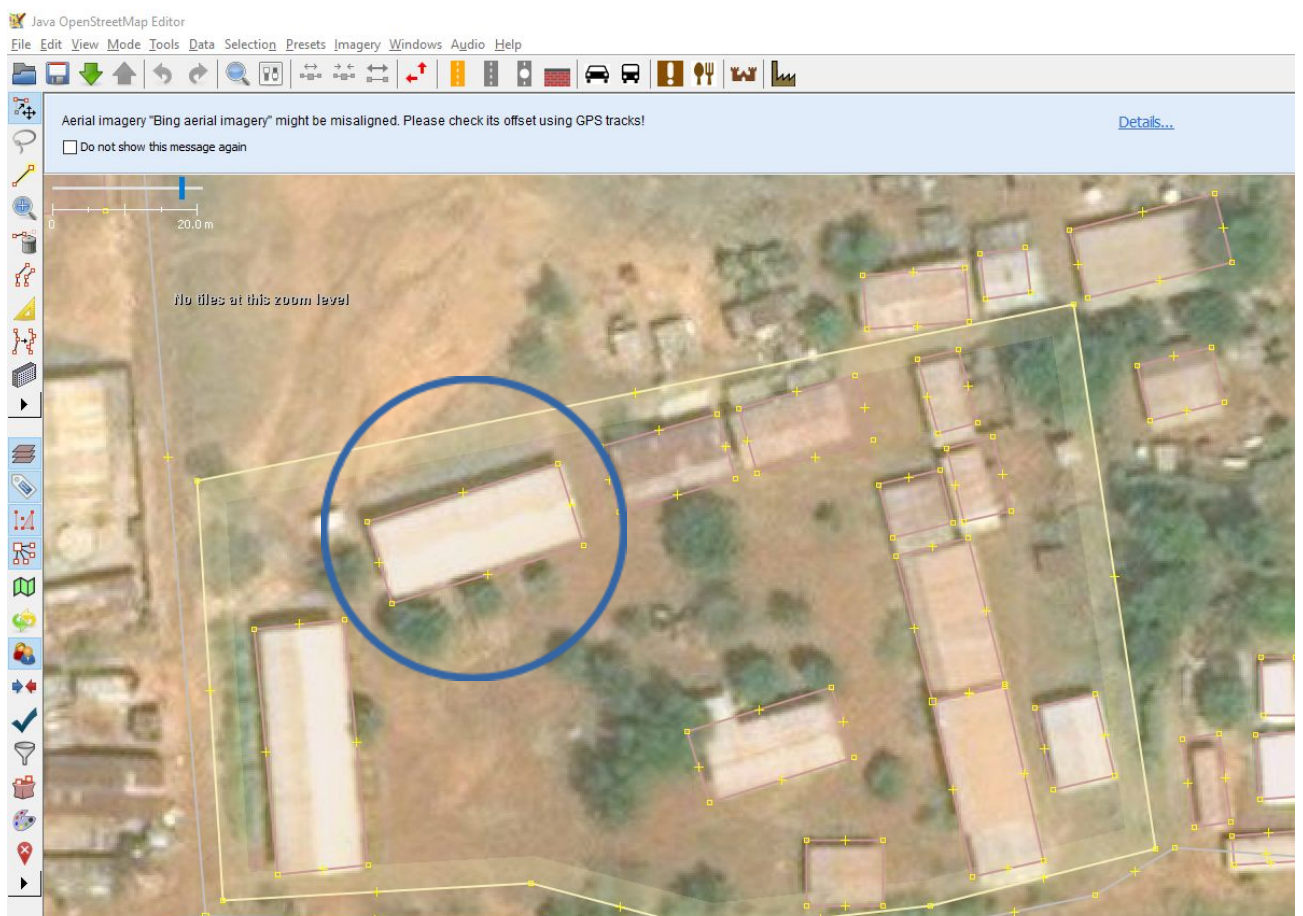
**Step 4:** If there is an offset, correct it before you start mapping. Click on the following button in JOSM:



This window appears:



Move the aerial view with the left mouse button to fit the objects and close the window with [OK].



Now you can start mapping. Have fun.